



# Trade™

Contemporary affordability and comfort



Management












Style



# Trade™

## Specifications

	DESCRIPTION	DIMENSIONS			SEAT HEIGHT
		W	D	H	IN
		IN	IN	IN	IN
4910	 <b>High back tilter</b> – Pneumatic height adjustment, fabric wrapped arms	25 635	27½ 699	44½ 1130	16½ - 20½ 419 - 521
	<b>4911</b> – As above except Low Back	25 635	26½ 673	39 991	16½ - 20½ 419 - 521
4915	 <b>Armchair</b> – Fabric wrapped arms	25 635	26½ 673	37½ 953	17 432
4916	 <b>High back knee-tilter</b> – Pneumatic height adjustment, fabric wrapped arms	25 635	27½ 699	45½ 1156	17½ - 20½ 445 - 521
	<b>4917</b> – As above except Low Back	25 635	26½ 673	40½ 1029	17½ - 20½ 445 - 521
4920	 <b>High back tilter</b> – Pneumatic height adjustment, vinyl-dipped arms	24½ 622	27½ 699	44½ 1130	16½ - 20½ 419 - 521
	<b>4921</b> – As above except Low Back	24½ 622	26½ 673	39 991	16½ - 20½ 419 - 521
4925	 <b>Armchair</b> – Vinyl-dipped arms	24½ 622	26½ 673	37½ 953	17 432
4926	 <b>High back knee-tilter</b> – Pneumatic height adjustment, vinyl-dipped arms	24½ 622	27½ 699	45½ 1156	17½ - 20½ 445 - 521
	<b>4927</b> – As above except Low Back	24½ 622	26½ 673	40½ 1029	17½ - 20½ 445 - 521
4930	 <b>High back tilter</b> – Pneumatic height adjustment, upholstered armcaps	26 660	27½ 699	44½ 1130	16½ - 20½ 419 - 521
	<b>4931</b> – As above except Low Back	26 660	26½ 673	39 991	16½ - 20½ 419 - 521
4935	 <b>Armchair</b> – Upholstered armcaps	26 660	26½ 673	37½ 953	17 432
4936	 <b>High back knee-tilter</b> – Pneumatic height adjustment, upholstered armcaps	26 660	27½ 699	45½ 1156	17½ - 20½ 445 - 521
	<b>4937</b> – As above except Low Back	26 660	26½ 673	40½ 1029	17½ - 20½ 445 - 521

**Global - Canada**  
 560 Supertest Road Downsview  
 Ontario Canada M3J 2M6 Tel (416) 661-3660  
 Dealer Customer Service: Fax (416) 736-6685  
 Government Customer Service: Fax (416) 739-6319

**Global - U.S.A.**  
 17 West Stow Road P.O. Box 562  
 Marlton New Jersey U.S.A. 08053  
 Tel (856) 596-3390 (800) 220-1900  
 Fax (856) 596-5684

**Global - International**  
 560 Supertest Road Downsview  
 Ontario Canada M3J 2M6  
 Tel (416) 661-3660  
 Fax (416) 667-1821

**G.G.I. Office Furniture (UK) Ltd.**  
 Global Way, Darwen,  
 Lancashire BB3 0RW, UK  
 Tel +44(0) 1254 778500  
 Fax +44(0) 1254 778519

Visit us on the World Wide Web at [www.globaltotaloffice.com](http://www.globaltotaloffice.com)

Offices throughout Canada, United States, United Kingdom, France and Australia. Distribution around the world. A member of the Global Group.

© 2000. ®, ™ Trade Marks of Global Total Office. These products may be covered by one or more issued patents or pending patent applications in Canada, the U.S. and elsewhere. Specifications are correct at time of printing. Printed in Canada. Creative / Global Group Design. Center rev. 020300 / RT



# Trade™ is an affordable choice for management seating



4935

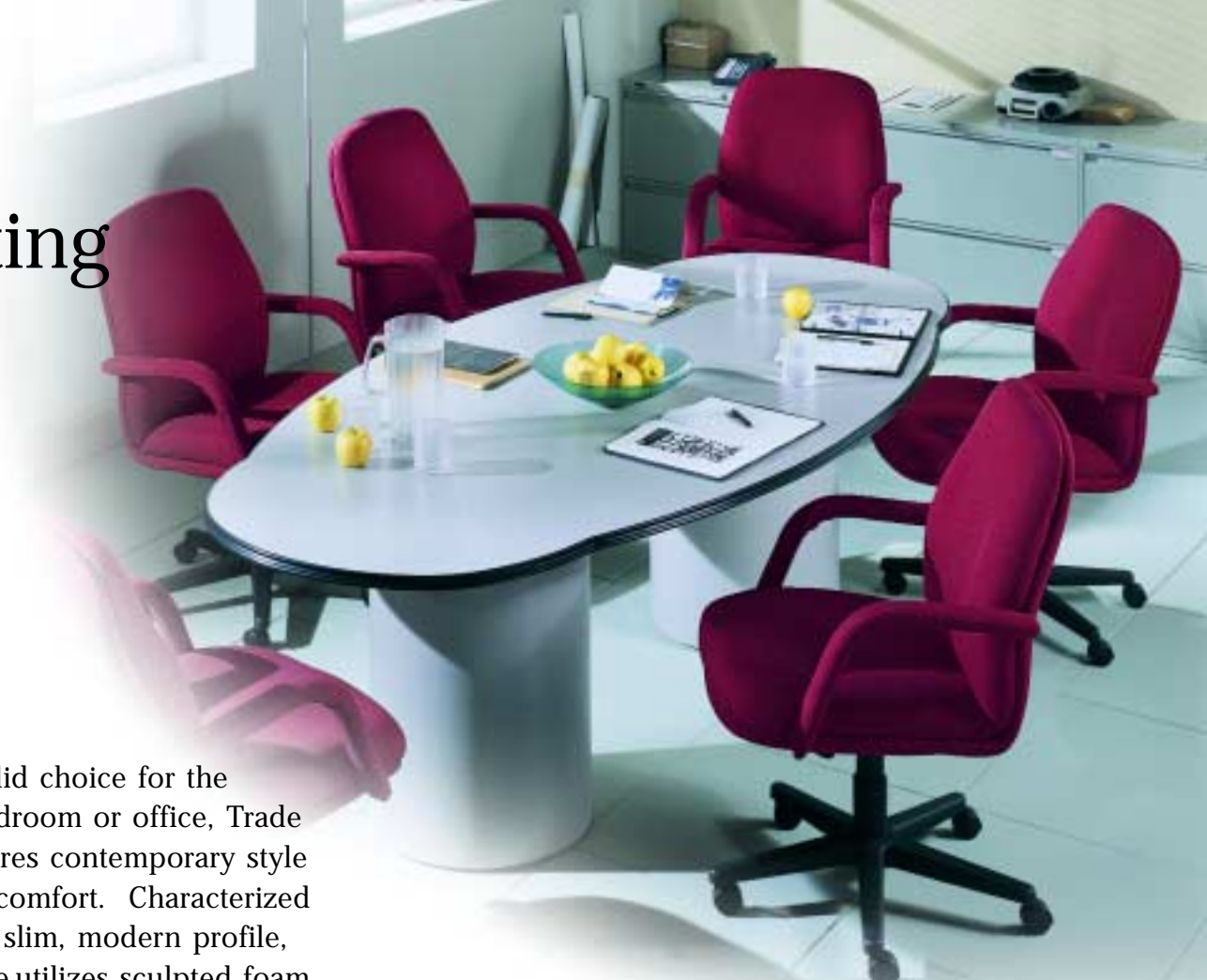


4930



4937

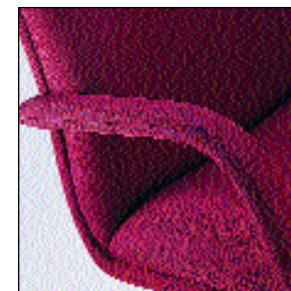
Trade standard models include high back and low back tilters and knee-tilters with pneumatic height adjustment. Armchair models are also available.



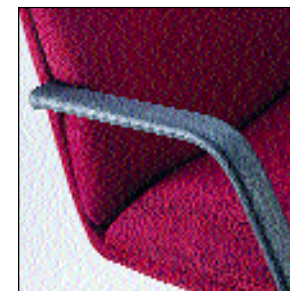
A solid choice for the boardroom or office, Trade features contemporary style and comfort. Characterized by a slim, modern profile, Trade utilizes sculpted foam cushioning. Ergonomically designed, the cushioning not only provides a generous seat, it also promotes good lumbar support for long lasting comfort.

## Meetings

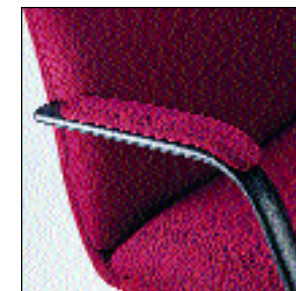
## arm Options



Fabric-wrapped



Vinyl-dipped



Upholstered armcap

Trade comes in a choice of 15 different models with three contemporary styled arm options.